

# **Everything you wanted to know about candlestick charts**

# **C o n t e n t s**

## **Chapter 1.**

### **What is a candlestick chart?**

## **Chapter 2.**

### **Candlestick shapes:**

Anatomy of a candle

Doji

Marubozzo

## **Chapter 3.**

### **Candlestick Patterns**

Harami (bullish / bearish)

Hammer / Hanging Man

Inverted Hammer / Shooting Star

Engulfing (bullish/ bearish)

Morning Star / Evening Star

Three White Soldiers / Three Black Crows

Piercing Line / Dark Cloud Cover

## **Chapter 4.**

### **The history of candlestick charts**

## **Candlestick Chart Sheet**

# Chapter 1.

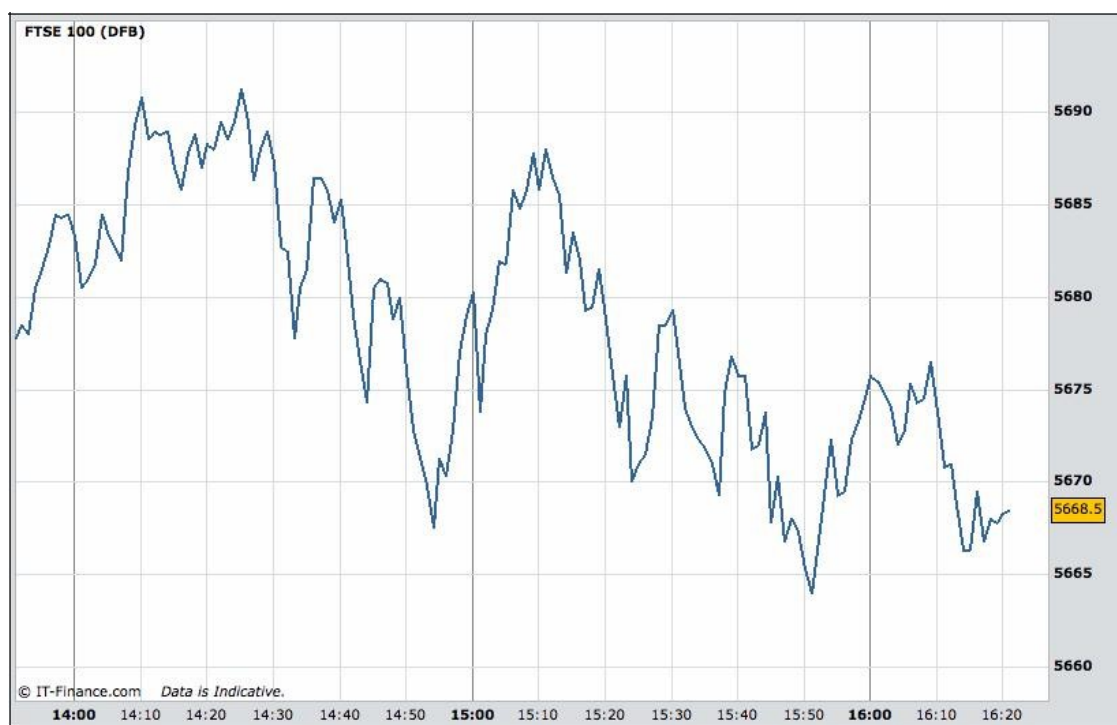
## What is a candlestick chart?

Before I start to talk about candlestick patterns, I'd like to get right back to basics on candles: what they are, what they look like, and why we use them ...

### Drawing lines

When you look at a chart of market prices, you can usually choose from line charts or candlestick charts.

A line chart will take its price levels from the opening or closing prices according to the timeframe you have selected. So, if you're looking at a one-minute line chart of closing prices, it will plot the closing price for each one-minute period – something like this ...



Line charts can be useful for looking at the "bigger picture" and finding long-term trends, but they simply cannot offer up the kind of information contained in a candlestick chart.

Here is a one-minute candlestick chart for the same period ...



At first glance, it might look a little confusing, but I can assure you that once you're used to candlestick charts – you won't look back.

Candlesticks are now such a familiar part of our trading scenery, it's hard to believe that only 20 years ago, they were a strange and mysterious import from Japan.

## Understanding the clues candles hold

One of the best things about the clues we find in candlesticks is that they are visual and very intuitive to the trader.

Think you're not intuitive? Well try this simple test ...

Which of these patterns signals an up trend, and which signals a downtrend?

1. Dark cloud cover
2. Morning star
3. Three black crows

If you answered "down", "up", "down" – you'd be absolutely right. And you've just passed your first test in candlestick theory!

With practice, reading candlesticks will become second nature – a quick glance can give you confirmation to enter a trade you're dithering over, or it can tell you that now is the moment to exit and take profits.

Over the following pages, I want to show you how you can learn to spot these patterns quickly and easily. I'll also let you in on the patterns that

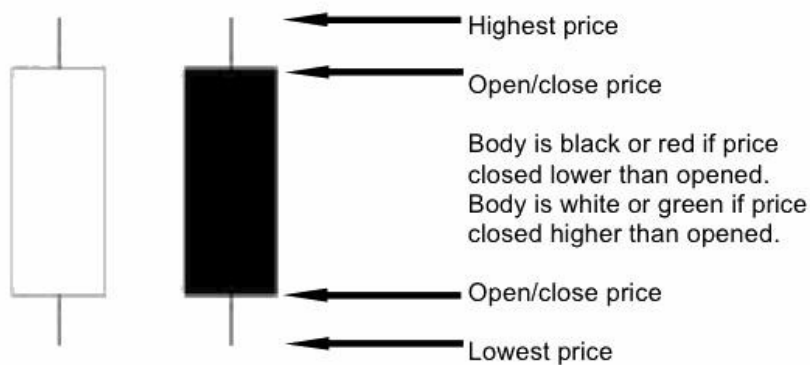
are really worth listening to – and the ones that can be unreliable and should be approached with caution.

## Chapter 2. Candlestick Shapes

### Basic candlestick anatomy

Whenever you look at a price chart, you will select a timeframe for that chart – perhaps it's a minute ... or an hour ... or a day.

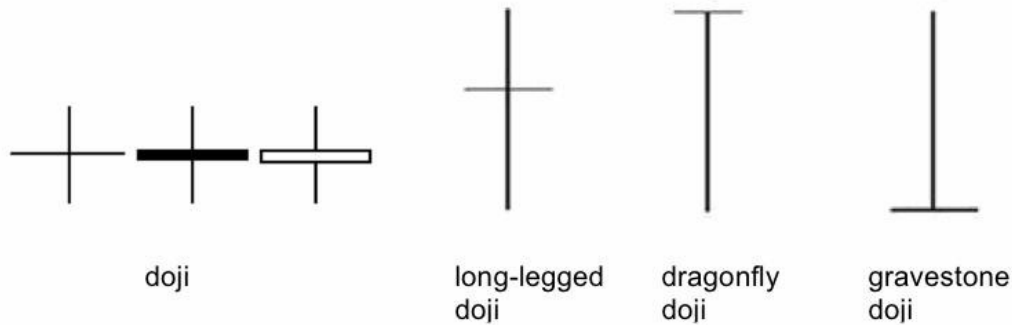
Rather than simply plotting the open or close price for that time frame, the candlestick gives you information about what went on during that period of time ...



Having all this extra information, gives you a heads-up about market sentiment – and can offer invaluable clues about the way the market will move.

## The Doji

The Doji is a candlestick where the opening and closing prices are the same (or almost the same). It can take many forms, as shown here, depending on what the trading activity was in that period.



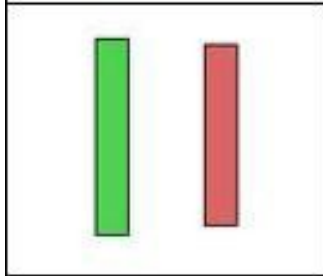
What's key with a doji is that neither the bears nor the bulls have gained control, and that the price has ended where it began. It's a sign of indecision in the market, and could (in conjunction with other indicators) signal a change in market direction.

**Applying doji candlesticks:** a good trick is to look out for a doji near the edge of a price channel (i.e., if a doji appears at the top of a channel it could indicate a bearish correction.)



## The Marubozu

The text-book marubozu is a long candle, which implies that the day's trading range has been large. And it should have no upper or lower wick ("marubozu" in Japanese means "shaved").



A green (or white) marubozu signals strong conviction among buyers, while a red (or black) marubozu indicates that sellers are eager to flee.



In practice, when you're looking at charts, a marubozu will often have a short wick at the top or the bottom.



## Chapter 3. Candlestick Patterns

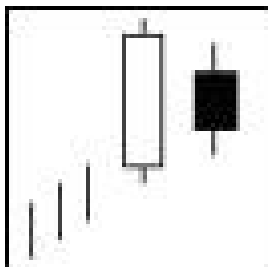
Throughout this chapter, I've grouped candlestick patterns in pairs where the patterns are very similar, except that one is bullish, and the other is its flipside bearish pattern.

### The Harami (Bullish & Bearish)

The harami is one of the most common candlestick patterns you'll come across, so it's important to recognize it – to understand what it means, and to understand its limitations.

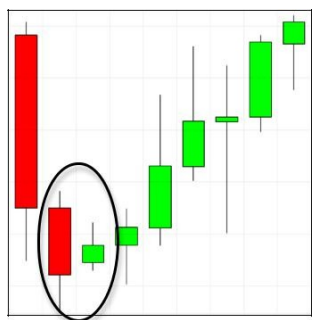
A harami is a two-session reversal pattern – i.e. it's made up of two candlesticks and implies that the price is about to turn.

It is indicated by a small body of the opposite colour, completely contained by the body of the previous session. It is not essential for the two candles to be opposite colours, but this tends to give a more reliable signal.



As you can see here, the body of the small black candle is completely within the confines of the body of the previous white candle. This indicates that the upward trend is running out of steam.

Here are a couple of examples:



This bullish harami shows the sellers beginning to dominate as they come back into the market:



This bearish harami has a shadow that extends beyond the body of the previous candle – some traders wouldn't regard this as a "true" harami. However, it's body is entirely within the previous green candle, and a reversal follows:

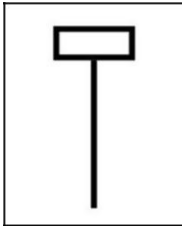
I'll be blunt with you – a harami doesn't always live up to its hype. While it is touted as a "reversal indicator" – you may find yourself disappointed by its reliability.

The psychology behind a harami is that a possible change in sentiment may be happening. The small candle does not necessarily mean a strong reversal is coming. Often with a harami pattern, several days of tight range trading, referred to as "congestion" or "consolidation," will follow. A harami on its own says "the chart MIGHT reverse." It is best to look for confirmation and to combine the harami with other longer-term patterns.

Be aware of haramis, and watch for what they are telling you about market sentiment – but don't have a blind faith in them.

## The Hammer (bullish) & The Hanging Man (bearish)

This is one of the best-known reversal indicators ...



It is a candlestick pattern that consists of just one candle (although with candlesticks it is always best to view them in context of the candlesticks around them – in particular the candle that follows immediately after).

The hammer or hanging man candle has a long lower wick, short body, and little or no upper wick. Strictly speaking, the lower wick should be at least two times longer than the body – the longer, the better. And depending on where you find it on a chart, it is called either a hammer or a hanging man.

**A hammer:** is found in a downtrend, and signals a bullish reversal. The long lower wick shows a period in which sellers were in control, but the body shows buyers coming back in. From this we can tell that there is strong buying by bulls as the period of sell-off declines.

As with all single candlestick patterns, we should wait for next candle to confirm that buyers are in control.



Here's a chart for Eur/USD. Note how the strong selling action and increased volume (indicated by the long lower wick) on the candlestick is reversed as buyers come back in, and that this coincides with an oversold indicator on Stochastics. The green candlestick opening above the body of the hammer confirms the bullish trend.

**A hanging man:** is the same shape as hammer, but found in an uptrend. We don't expect to see strong selling pressure (seen in the long lower wick on the candle) in an uptrend, so here it suggests a change of market sentiment and a reversal to downside.



Here's an example from a FTSE 1-minute chart.

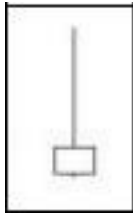
In this case, the hanging man shape coincides with the Stochastics showing the price to be overbought, and the next candle confirms the move.

There's no hard and fast rule about what colour a hammer or a hanging man should be – the fact that they have a short body already means that there's indecision coming into the market. However, a green (or white) hammer and a red (or black hanging man) are stronger indicators.

(The chart above is quite a good illustration, because you'll probably be able to spot a couple of hammers on there, too – see what you can find!)

## Inverted Hammer (bullish) & Shooting Star (bearish)

This candlestick is, as you would expect – a hammer turned on its head ...



It is a candle with a small body and long upward wick, signally a possible reversal. Where it appears in a chart affects whether it's an inverted hammer or a shooting star.



An inverted hammer forms after a downtrend or at the bottom of a period of consolidation. The reversal isn't confirmed until you have a bullish candle in the next period.

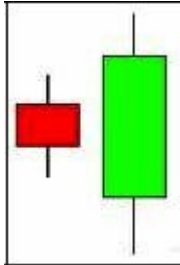


A shooting star forms after an uptrend or at the top of a period of consolidation.

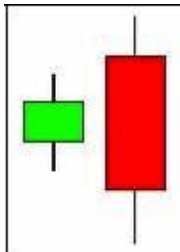
Inverted hammers and shooting stars can have green or red bodies – what's important here is that the body size is small, that the upper wick is at least twice the length of the body, and the lower wick is negligible.

## Engulfing (Bullish & Bearish)

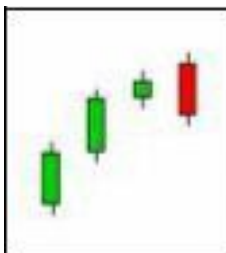
An engulfing pattern signals a reversal, and can be bullish or bearish. It comprises two candles. The body of the second must engulf the body of the first, and must be the opposite colour to the first.



For a bullish engulfing candle, we have a smaller red candlestick, followed by a green candlestick, the body of which is greater in size than the previous candle.



For a bearish engulfing candle, the first candlestick is smaller and green, followed by a red candlestick, the body of which engulfs the previous candle.

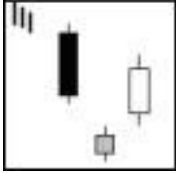


In this example of a bearish engulfing pattern, we have a clear uptrend, where the final candle has a red body, which engulfs the body of the previous candle. This suggests that strong selling pressure has come into the market, and could indicate a reversal or period of stagnation.

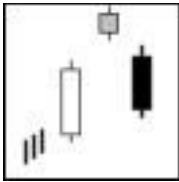
!

## Morning Star (Bullish) & Evening Star (Bearish)

The morning star and the evening star patterns are among the most reliable candlestick signals. They are strong signals – rather like a hammer or shooting star will bells on!



A morning star is a three-candle pattern, beginning with a candle that is strongly down. The second candle's real body should be small and should not touch the prior candle's real body. The third candle should be strongly up.



An evening star is the same idea, just in reverse. Therefore, its first candle is strongly up. Its second candle's real body should be small and should not touch the first candle's real body. And the third candle should be strongly down.

The small body of the star represents indecision by both the bulls and the bears.

While the larger trend may be strongly up or strongly down, the presence of the star indicates that the prevailing direction may have come under profit taking or that the other side has actually taken control. Remember, the previous bar should be a strong bar in the direction of the trend which indicates that the bulls (in an up-trending market) or the bears (in a down-trending market) are in control. This strength in direction is what makes the appearance of the star that much more important as this conviction has suddenly evaporated.

Here's an example of a major turning point in the euro last year.



As you can see, we have a strong upward candle, in the direction of the trend, followed by a gap up to a small candle, showing indecision. The next candle, moving strongly downwards confirms the morning star signal. And traders who spotted this evening star reversal signal will have enjoyed a big downward swing.

## Three White Soldiers (Bullish) & Three Black Crows (Bearish)

Here's a great example of three black crows I spotted on the AUD/USD chart ...



Three long red (or black) candlesticks with lower and lower closes appear within an upward trend (in this case, a rising triangle). They show powerful selling action which strongly suggest that more selling is imminent. And, as we see, the price continued downwards through long-term support at 10536.

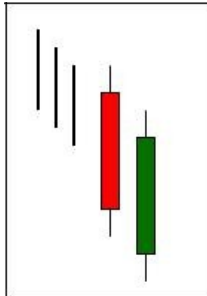


The flip-side to three black crows are three white soldiers – three strong green (or white) candlesticks within a downtrend. These are a bullish signal of strong buying action at work.

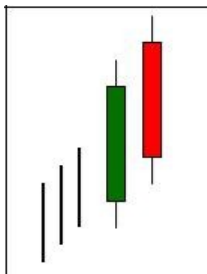


## Piercing Line (Bullish) & Dark Cloud Cover (Bearish)

The piercing line and dark cloud cover are reversal signals similar to the engulfing pattern except the second candlestick doesn't completely engulf the body of the first – it should close at least halfway into the real body of the first.



A piercing line pattern occurs in a downtrend. A strong red candlestick is followed by a candlestick that opens below its close, which perpetuates the downtrend. However, the price then moves up and closes above the midpoint of the previous candle. This suggests to the bears that a bottom could be forming.



Dark cloud cover occurs in an uptrend, when a red candle opens above the previous candle's closing price, but then the price retreats to below the midpoint of the previous candle.

As a reversal signal, these are not as strong as engulfing candles. The further the close of the second candle cuts into the body of the first candle, the more valid the signal. What piercing line and dark cloud cover do offer traders is cause to pause – a minor top or bottom may be about to form, or you may be entering a period of consolidation.

## Chapter 4.

# History of Candlesticks



I will freely admit to being a bit of a candlestick anorak. And my obsession for watching them pop out of the right-hand side of my trading screen at me could be compared to train spotting!

For that reason, I couldn't help but include a bit of background about where these funny-shaped trading tools came from, and their slow rise to fame ...

### Back in Japan

While Japanese candlesticks have been around for hundreds of years - they have only been widely applied by Western traders in the past couple of decades.

The man we can credit for introducing Japanese candlesticks to the West is one Steve Nison - but I should really start this story at the beginning ...

Four hundred years ago ...

... Seventeenth century Japan was under the control of military leaders, or Shoguns. If you remember the old Richard Chamberlain movie, you've probably got the idea - plenty of samurais wielding swords.

A number of attempts at creating a hard currency had failed dismally, so, rice had a status pretty close to cash.

That meant that rice merchants were the seventeenth-century equivalent of big-city bankers.

However, regional imbalances in supply of rice meant that its price lacked any stability. Merchants attempted to set rice prices, but those who were seen to be doing too well, ran the risk of having their heads chopped off by the local warlord. (There's an idea for dealing with bankers' bonuses.)

However, towards the end of the century, the Dojima Rice Exchange developed, which allowed merchants to grade and sell their rice at set prices - without the need for bloodshed.

## **Derivatives market here we come ...**

By the mid -1700s this process had developed into a sophisticated exchange, where a receipt (or coupon) for rice in the warehouse could effectively be used as currency.

This Dojima Rice Exchange, also saw the dawn of the futures market - where merchants could "sell" crops from next year (or many years to come) in return for cash in the here and now.

These futures were called "empty rice" coupons, and the futures market had developed to such a degree, that in 1749, 110,000 bales of rice were traded on the exchange, while only 30,000 bales of rice existed in the whole of Japan at the time.

## **Where do the candlesticks come in?**

Don't worry - I'm getting there.

Onto this scene steps our hero - Munehisa Homma. The Homma family were to rice what the Murdochs are to newspapers. There was even a saying at the time: "I will never become a Homma, but I would settle to be a local lord." Not very catchy, but you get the drift.

At the age of 26, Munehisa Homma took over the family business, and turned out to be rather good at it.

He kept careful records of rice prices, weather conditions and of trading on the local exchange.

These records led to the development of a theory on forecasting market direction, which came to be known as Sakata rules, and is the backbone of candlestick theory as we know it today.



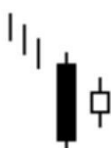



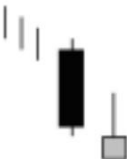


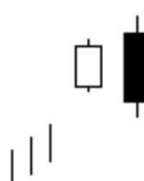
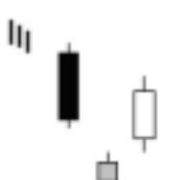
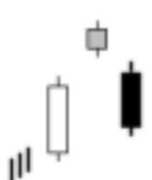


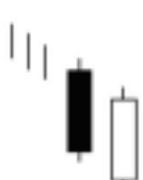
For his services, Homma was honored with the title of samurai. Not even Warren Buffet has managed that!

## **Candlesticks move westward**

Candlestick charting remained the exclusive preserve of Japanese traders for the next two-hundred-plus, and never really caught on in the West until Steve Nisson published his book, *Japanese Candlestick Charting Techniques* in 1991.

Nison tracked down and translated a huge collection of Japanese texts that described the many candlestick charting methods that traders take for granted today.

# Candlestick Chart Sheet :-

Basic candle shapes					
<b>Doji</b>	Reversal: a sign of market indecision		<b>Marubozo</b>	Continuation: a sign that the trend is maintaining momentum	
Bullish patterns			Bearish patterns		
<b>Bullish Harami</b>	Reversal indicated by small body of opposite colour entirely contained in body of previous session.		<b>Bearish Harami</b>	Small body of opposite colour contained in body of previous session signals possible end of uptrend.	
<b>Hammer</b>	Buyers have come in – the downtrend may be about to reverse.		<b>Hanging Man</b>	Suggests that many longs have positions they are trying to sell – may indicate a reversal.	
<b>Inverted Hammer</b>	The small body at the bottom of the trading range should concern bears. Could form a “morning star”.		<b>Shooting Star</b>	Price gap followed by small body to bottom of trading range suggests that bulls are protecting their gains.	
<b>Bullish Engulfing</b>	First candle reflects trend; second candle's body engulfs size of first candle's body – a reversal is indicated.		<b>Bearish Engulfing</b>	Second candle opens above the first but is followed by a sell off that engulfs body of first candle – the bears are gaining ground.	
<b>Morning Star</b>	First candle is long and black; second gaps below first's close and trades in a small range; third is long and white.		<b>Evening Star</b>	The small range of the second candle suggests indecision, and the lower close of the third candle confirms the bears.	
<b>Three White Soldiers</b>	Three long white sessions with higher closes each day –powerful buying action is at work.		<b>Three Black Crows</b>	Three consecutive sessions of selling will worry bulls and may snowball into a sell-off.	
<b>Piercing Line</b>	Long black session is followed by opening at a new low, but closes above midpoint of first session.		<b>Dark Cloud Cover</b>	This pullback in the second session will cause bulls to question their stance.	